

EIFFAGE
HERBOSCH-KIERE

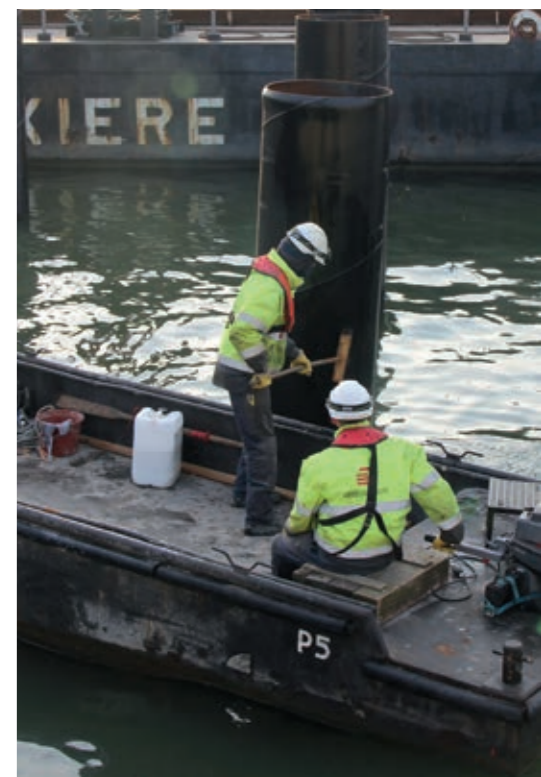
COMPANY & PROJECTS





CONTENTS

 OUR COMPANY	2-3
 OUR GROUP	4-5
 OUR SHEQ MANAGEMENT	6-7
 OUR PROJECTS	8-29
 Marine & Civil Works	10-17
 Salvage Works & Wreck Removal	18-19
 Marine Demolition	20-21
 Offshore & Renewables	22-25
 Foundation Works	26-27
 Environmental Works	28-29
 Charter Services	30-31



OUR COMPANY

For over a century HERBOSCH-KIERE has played a prominent role in marine, harbour, river and offshore construction projects. Yet even though we can draw on such extensive experience, with our world constantly changing we fully realise how crucial it is to carry on learning. By continuously investing in our staff and equipment, we will ensure that we have the knowledge and resources we need to carry out any specialist work required of us.

We take great pride in our people, whose innovative, proactive approaches enable HERBOSCH-KIERE to tackle highly complex challenges. And our project managers and engineering team work very hard to provide safe, tailor-made, cost-effective solutions for our clients.

In Belgium we have a dedicated quay and workshop where technicians maintain our marine plant to the very

highest standards. Located in the Port of Antwerp (one of Europe's largest Ports), these facilities are an important base from which we can undertake projects anywhere in the world. Together with our UK subsidiary Herbosch Kiere Marine Contractors Ltd and our shareholdings in SCALDIS and CTOW, we can handle a vast range of maritime projects, with the common aim of always safely delivering value engineered projects.





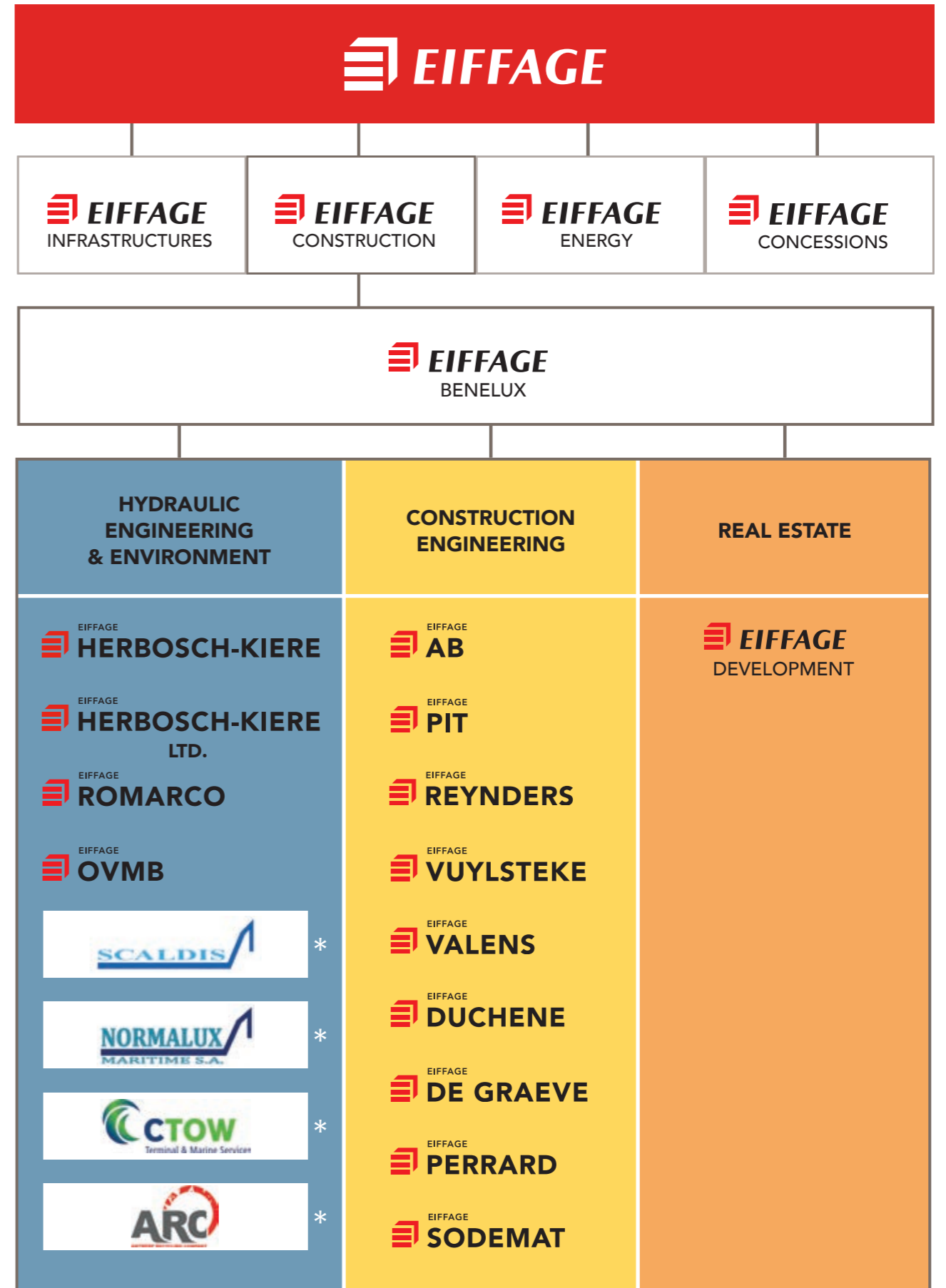
OUR GROUP

HERBOSCH-KIERE is a member of the EIFFAGE BENELUX GROUP, which in turn is part of the EIFFAGE GROUP, a leading European management contractor.

EIFFAGE is prominent player in France and known globally for its exceptionally broad range of skills and technical expertise. The Group's business activities are focused on the construction industry, real-estate development, civil engineering, road construction, energy and concessions.

The culture of constant innovation, commitment and expertise among the Group's 64,000 employees is reflected in the quality of the 100,000 projects we carry out around the world every year.

The Financial stability of our long-established parent company provides reassurance for both us and our clients.



* Herbosch-Kiere is part shareholder

OUR SHEQ MANAGEMENT



Through an integrated SHEQ management structure, suitably qualified and experienced employees, rigorous training and continuous improvement, HERBOSCH-KIERE pursues a zero-incident strategy towards safety, environmental and quality issues. There is real resolve and strong commitment from the directors and senior managers to continuously improve the SHEQ performance of the company and to produce industry best results.

To achieve this the company has developed an approved integrated management system which encompasses **VCA****, **ISO 9001:2008**, **ISO 14001:2004** and **CO₂ Awareness Certificate level 3**.

Safety and Health

Our foremost objective is the provision and maintenance of a safe and healthy environment for clients, employees, contractors, visitors and the general public.

Quality

We aim to ensure that all our products and services exceed the expectations of our clients, by being of superior quality, delivered ahead of time and within budget.

Environmental

We are continually investigating new ways to promote greater sustainability, conserve energy and natural resources and use more environmentally responsible materials and techniques.



OUR PROJECTS

Our core activities include **maritime construction, demolition, rock placement and heavy lifting** and our clients range from local authorities, port and harbour operators, to offshore companies, renewable energy specialists and private customers.

Our engineering expertise enables us to provide safe, innovative, cost-effective solutions for projects with a high degree of technical or logistical difficulty. However, we are equally enthusiastic about undertaking small-scale, water-related projects that need to be implemented quickly and with precision.

We guarantee a unique approach to your project, with personal interaction, efficient communication and a very short supply chain.



PROJECTS

MARINE & CIVIL WORKS



Construction of harbour breakwaters in Ostend, Belgium, with two of our vessels: the ALBATROS and the ATLANTIS.



Construction of a lock (500m x 68m) in Waasland Port, Port of Antwerp, Belgium.



Construction of a 700m jetty in the Port of Antwerp, Belgium.



Construction of a sea jetty in Terneuzen, Netherlands using the Atlantis.



Reconstruction of a 700m quay wall in the City of Antwerp, Belgium.



Design and construction of a new lock weir in Harelbeke, Belgium.



Piling works for the construction of two new pylons 192m high on the banks of the River Scheldt, Belgium.



Construction of a 220m quay wall in the Port of Ghent, Belgium.



Construction of a current-deflecting wall with the ALBATROS in the Port of Antwerp, Belgium.



Extension of Pier E to accommodate the arrival of new, longer passenger ships in Dover, UK.



Placement of 500 concrete blocks of 50t and 33t by our multi-purpose vessel, the ATLANTIS, in Boulogne, France.



Demolition and construction of a bridge over the Albert Canal, Belgium.



Construction of a flood control area in Belgium that will become a nature reserve.



Extension of Bankside Pontoon in London to give more boats access to the pier.



Piling works for the renovation of Blankenberge Pier, Belgium.

PROJECTS

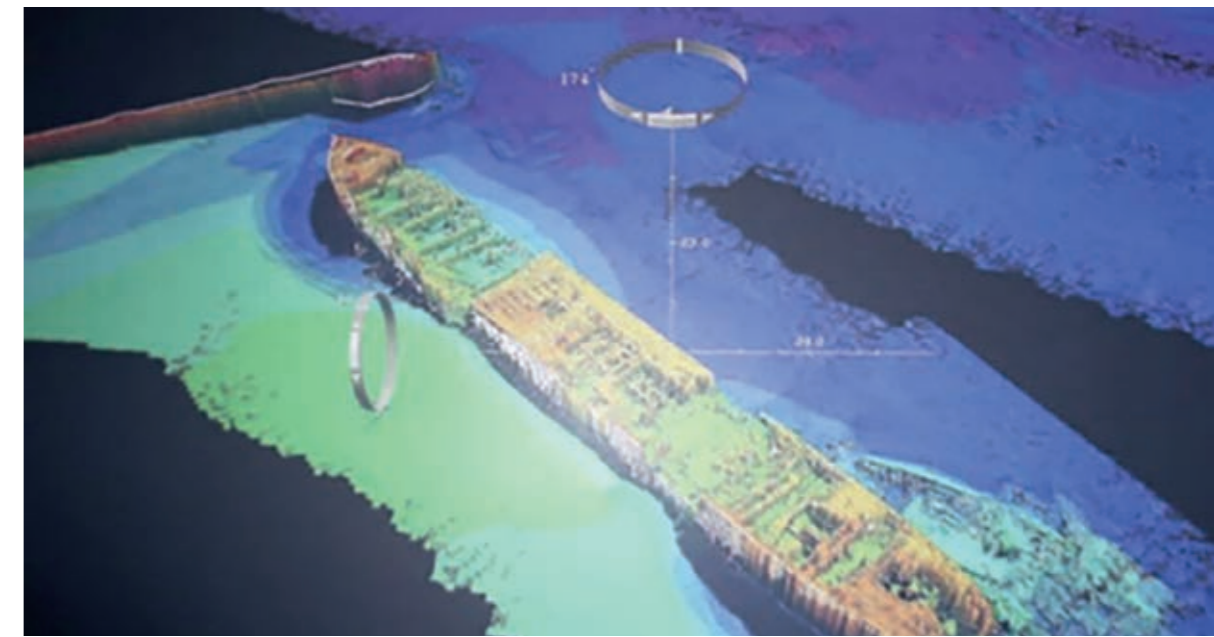
SALVAGE WORKS & WRECK REMOVAL



Removal of 38 wrecks using the RAMBIZ in the Westerscheldt, the Netherlands.



Salvage of the cargo of the Flinterstar with the RAMBIZ, Belgium.

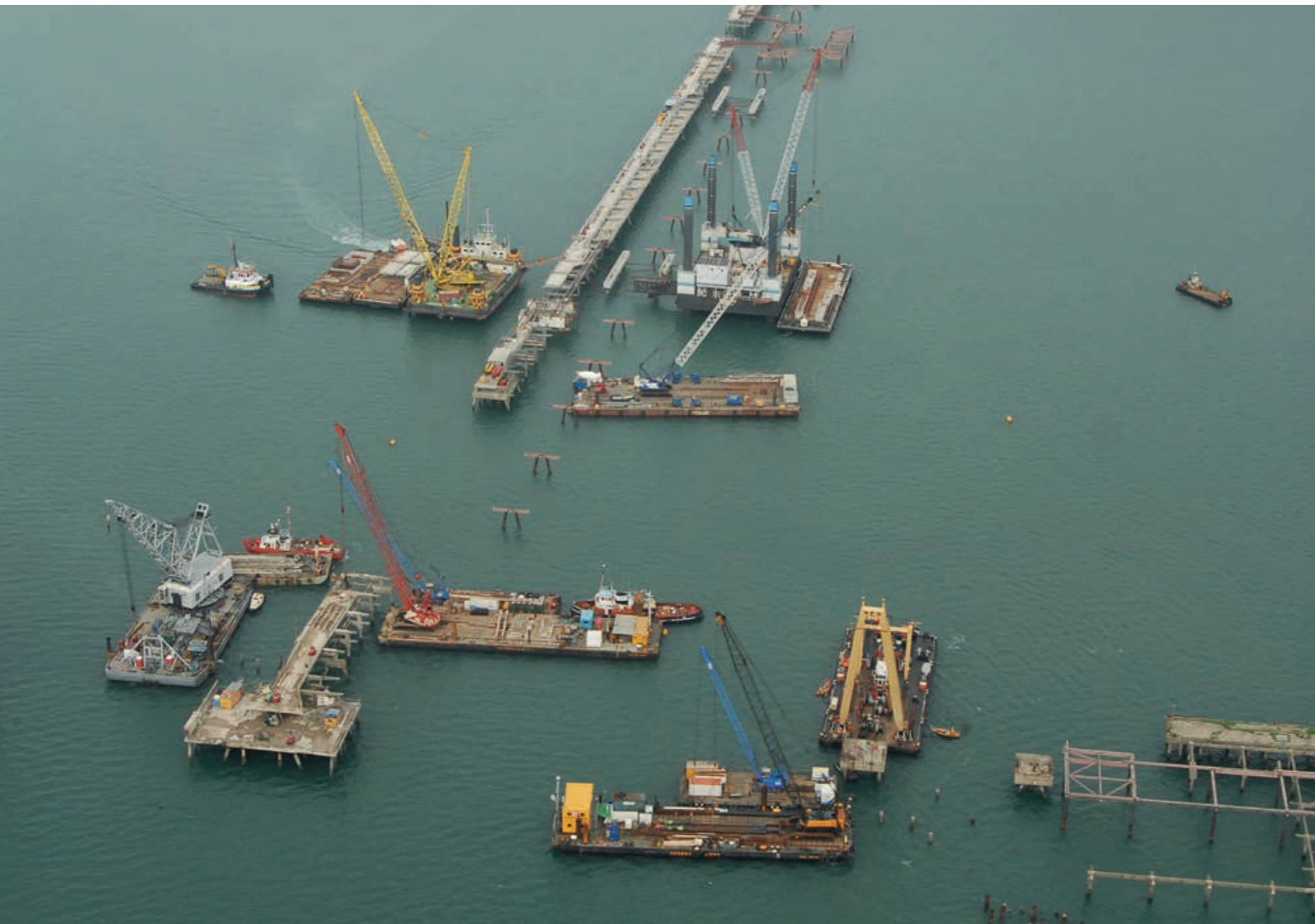


Salvage of a blockship in the Port of Dover, UK.



Salvage of a tugboat in the Port of Antwerp, Belgium.

MARINE DEMOLITION



Demolition of a jetty in Milford Haven, UK.



Demolition and removal of the Floating Dock Jetty in Portsmouth, UK. The deck of the jetty was cut into 18 sections, some weighing as much as 400t.



Demolition and reconstruction of a bridge in Viersel, Belgium.



Demolition of a 700m quay wall in the Scheldt, Belgium.

PROJECTS

OFFSHORE & RENEWABLES



The ALBATROS working on the construction of wind farm foundations for the Kårehamn Offshore Wind Park, Sweden.



Installation of 33kv transmission cables by the ATLANTIS on the London Array wind farm, UK.



Installation of the UK's first grid-connected tidal turbine using the Octopus, Orkney Islands.



Rock placement by the ATLANTIS to protect subsea cables close to Noss Head, Scotland.



Repair of subsea cable using the ATLANTIS, Liverpool.



Dredging works for cable laying using the ALBATROS on the Westliche Adlergrund Windpark, Germany.

FOUNDATION WORKS



Installation of ground anchors to stabilise the new quay wall in Sint-Baafs-Vijve, Belgium.



Construction of diaphragm walls up to 42m made of reinforced concrete for the Oosterweel Project.



Installation of micropiles to reinforce the foundations of 26 of Elia's electricity pylons, Belgium.



Installation of micropiles as foundations for the lock in Harelbeke.

PROJECTS

ENVIRONMENTAL WORKS



Excavation of 21.000m³ of radioactive soil and sludge from a Umicore site, Belgium.



Asbestos removal, Belgium.



Waste treatment and coverage in Ghent, Belgium.



Waste treatment and coverage in Ghent, Belgium.

CHARTER SERVICES



The OCTOPUS providing geotechnical services in the Port of Antwerp, Belgium.



The ATLANTIS rock dumping for protection and stabilisation works on the Oosterschelde storm surge barrier in the Netherlands.



The ATLANTIS rock placing for the new coast road viaduct on Réunion Island in the Indian Ocean.



Fabrication and installation of asphalt mattresses weighing approx. 200t, for scour protection in Gdansk, Poland.



Follow us on Social Media



Herbosch-Kiere NV

Haven 1558 - Sint Jansweg 7

9130 **Kallo** | **Belgium**

Tel: +32 (0)3 575 02 82

Fax: +32 (0)3 575 13 10

info.hk@eiffage.com

www.herbosch-kiere.com

Herbosch-Kiere Marine Contractors Ltd

Power Road Studios, Studio 3.4

114 Power Road, Chiswick

London W4 5PY | **United Kingdom**

Tel: +44 (0)20 8987 9995

info.hkmc@eiffage.com

www.herbosch-kiere.com

Follow us on Social Media

