

## Vacancy: Control and Hardware-Integration Engineer



### Control and hardware-integration engineer in optical deformation measurement techniques

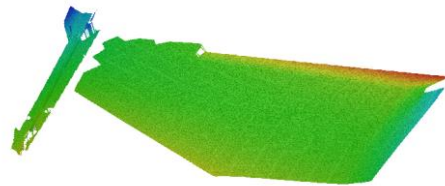
#### YOUR COMPANY

MatchID offers imaging solutions to measure the displacements and deformations of materials and structures. By integrating these measurements with design and development, we naturally validate computer simulations and accordingly play a key role in various innovative engineering verticals like

- small (nano-components) to large-scale (aerospace) structures;
- brittle (concrete) to very large (films) deformations;
- traditional to additive manufacturing production techniques.

MatchID is very R&D driven, located in the heart of Ghent, and operates with a young and dynamic team with an international customer base in Europe, America and Asia.

More info on [www.matchid.eu](http://www.matchid.eu)



#### YOUR JOB

As a control and hardware-integration engineer you will

- validate and benchmark our novel solutions;
- program, implement and test a wide range of new camera models into our platform
- optimize and develop custom hardware solutions (triggering, data acquisition, signal registration, automated calibration procedures, creation of mechanical and electrical tools, ...)
- provide ideas for the future development roadmap;
- act in a technical role installing and validating equipment;
- cooperate with partners, customers, universities & research labs in technical discussions, reviews and technology evaluations;
- operate mainly from Ghent, Belgium.

## Vacancy: Control and Hardware-Integration Engineer



### YOUR PROFILE

- Master's degree (or above) in electrical or mechanical engineering, or equivalent by experience
- Knowledge of control and automation, signal processing, programming
- Strong analytical skills
- Can work independently
- Fluent English
- Dynamic and flexible
- Good interpersonal skills

### YOUR BENEFITS

- Highly technical SME
- Joining a young and dynamic team
- Highly motivational and driven environment
- Flexible, global, spin-off working culture
- Collaboration with prominent international companies
- Excellent environment for initiatives and personal development
- Prospect of becoming a permanent key player in a world-growing company
- Competitive and extensive reward package

### YOUR FUTURE?

Please send your personal motivation letter and CV to [info@matchid.eu](mailto:info@matchid.eu). We are looking forward to meeting you!