

# ML6

Accelerate Students

# ML6 at a glance

Accelerate Intelligence



**90+** Machine Learning & Data Engineering Experts. 300+ Use cases



**3** offices in Belgium, The Netherlands & Germany



**Largest and fastest growing AI company in Belgium,** by Deloitte's Fast50.



**Premier Partner** Google Cloud ML specialization and Reseller



**15%** of workforce fully dedicated to ML research



Trusted **open-source** contributions

# We focus on four **technical** AI domains.



**Language:**  
Written and  
spoken



**Vision:**  
Video's and  
pictures



**Time and control:**  
Sensor values and  
dynamic control



**Recommender:**  
Rank and match

In which we delivered  
**+300** projects

# Our total AI **expertise** transcends technology.

**Business Development**

**Strategy**



**AI in production**

**AI with little data**

**Governance**

**Data**

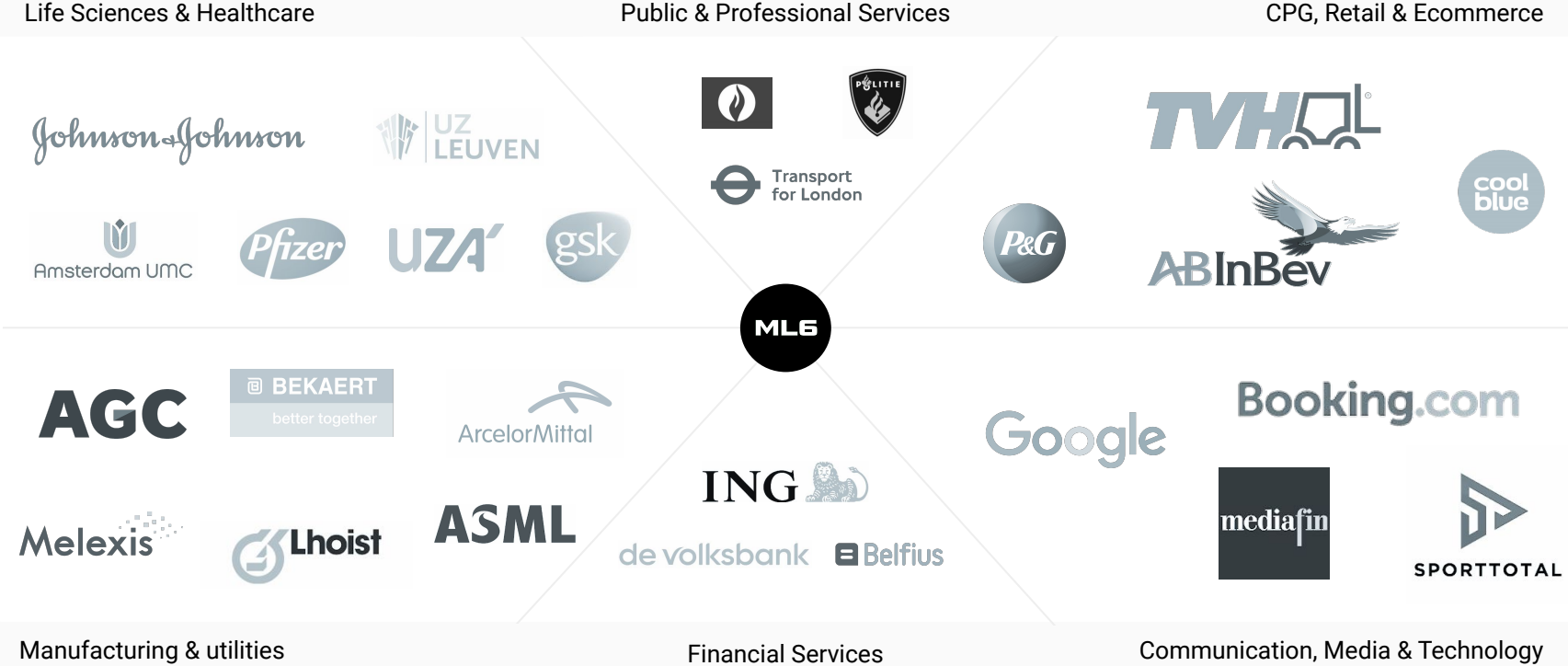
**Trustworthy AI (Ethics + Legal)**

**Explainability**

**Security**

**Privacy**

# In production at over 100 customers across industries.



And strongly **investing in research.**

“Working with ML6, we achieved four years’ worth of R&D in just two months.”

Peter de Jaeger, Bekaert



# Resulting in massive impact.

## Sarolea Motorcycles

### Battery Life Optimization

Improving battery life for electric motorcycle engines

[Take me to case study](#)



### Project Impact:

17%

Increase in electric vehicle  
autonomy

### Project Impact:

44%

Increase in viewer retention  
during live streams



## Leader in Media

### Sports Intelligence Engine

Analyzing and processing real  
time sports games

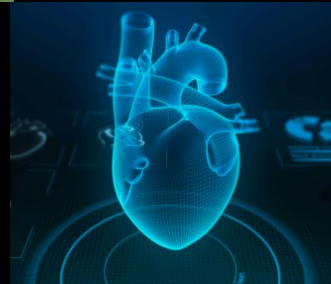
[Take me to case study](#)

## Leader in Healthcare

### Heart Failure Diagnostics

Predicting patient need for a  
pacemaker

[Take me to case study](#)



### Project Impact:

74%

Increase in accuracy for  
predicting the need for a  
pacemaker

**We strategise.**

**We research.**

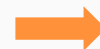
**We try.**

**We build.**

**We integrate.**

**We tailor to you.**

**wo <industry> cases**





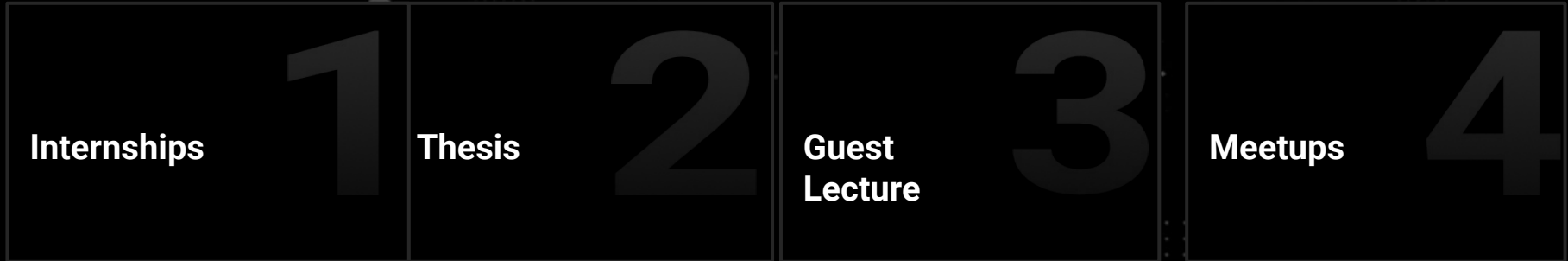
# By developing exceptional people

- Majority civil engineer computer sciences
- Deep expertise and experience in both consulting and ML projects
- 17% of time dedicated to specific ML research chapters
- International team, >10 different nationalities



# Possible collaboration.

At ML6 we love to collaborate with partners to create impressive end results. Therefore we put a high effort on the partnership with schools, student associations and third parties. Our goal is to combine the forces and share our practical knowledge with others.

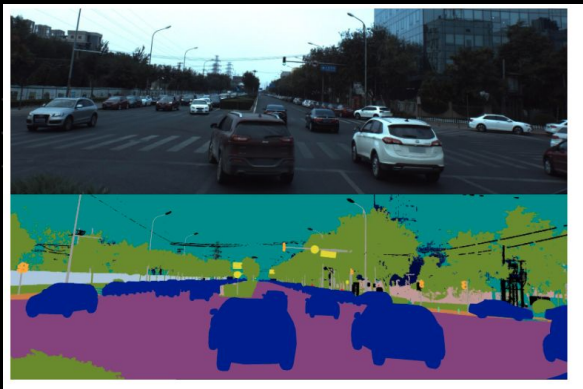


# 1. Internships.

At ML6 we think it is important to give the opportunity to learn, grow and thrive while working with the best of the best in a dynamic environment. We gladly accelerate students in taking the first steps into the professional world and towards the career of your dreams.

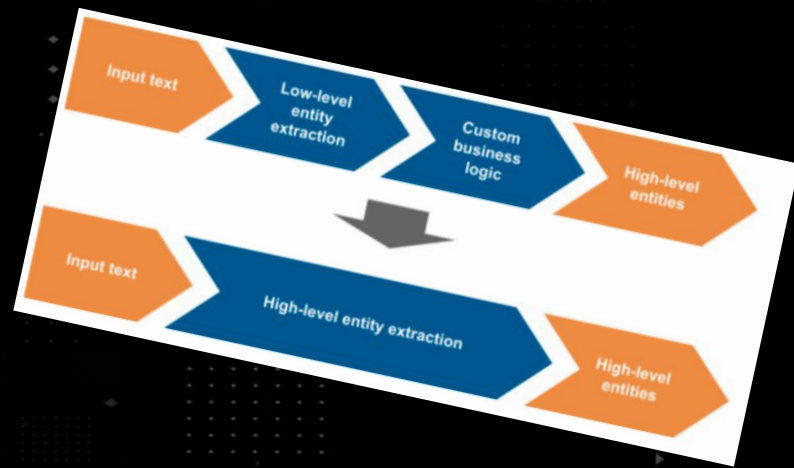
- ML engineers
- Data engineers
- Software engineers
- Solution engineers
- Customer engineers

# Take a look at some of our previous **internship** projects.



What GMM can do ?

- Raspberry Pi/  
Google Meets Add-on
- Some fancy-pantsy  
Speech-To-Text
- Sprinkles of  
Keyword Extraction-  
Summarization-  
Clustering
- Sexy  
dashboarding

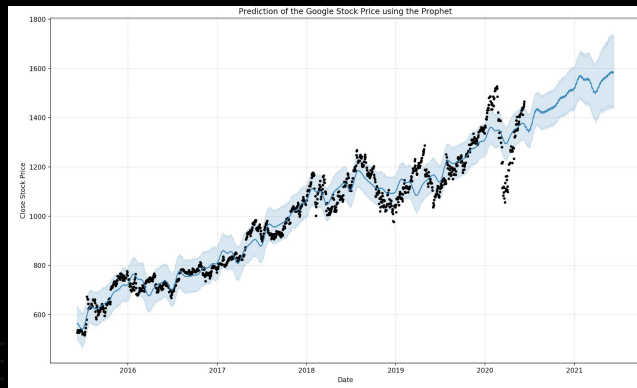
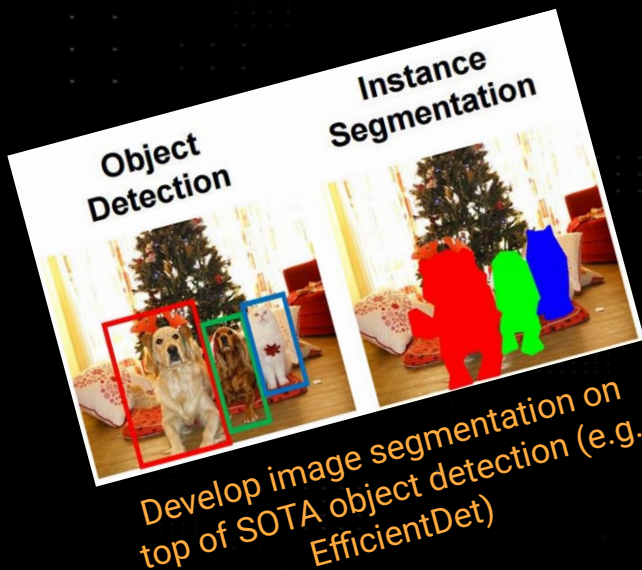


## 2. Thesis & course projects.

Research & innovation is part of ML6's day to day business. We can support a thesis from a practical point of view. This is in close collaboration with the promoter and the student. We can support in the hands on issues that the student is facing to accelerate the result of the thesis.

Additionally we can also judge on other projects where students present to a panel of experts.

# Take a look at some of our previous **thesis** projects.



Transfer Learning in Financial Time Series

### 3. Guest Lecture. Technical guidance

Knowledge sharing is key at ML6 and we like to support education & theory with our practical experience. We work on a daily basis with ML techniques and can share our best practices. Next to this we can make the theory more tangible by explaining how it is used in practice and what the added value can be to society.

- Technical in depth course (ex. Kubeflow, Keras fashion mnist, Google Cloud, BigQuery ML)
- Use cases
- Workshops

### 3. Guest Lecture. Application guidance

Finding a job can be difficult and how do you start this? Our team meets job seekers on a daily basis and can give you tips & trick on how to start your search. Additionally we explain the do's and don'ts before, during and after the job interview. In that way students feel prepared to start their job search.

- Where to look for jobs?
- How to apply for jobs? Resumé & motivation letter & online profiling
- How to do an job interview?
- Speeddating



# Take a look at some of our previous Lectures.

## Agenda

- Introduction ML6
- Introduction AI
- Possibilities of AI, Use Cases
- ML6 culture: crazy in house projects
- Outro
- Q&A

ML6

Copyright © 2021 ML6. All rights reserved. ML6 Confidential Information | 12

## A brief history of Machine Learning

ML6

Copyright © 2021 ML6. All rights reserved. ML6 Confidential Information | 13

## ML Timeline

- 1950 - Turing Test
- 1952 - Checkers
- 1957 - Perceptron
- 1989 - Computer Vision
- 1997 - Chess: Deep Blue
- 2011 - Jeopardy: Watson
- 2015 - Go: AlphaGO

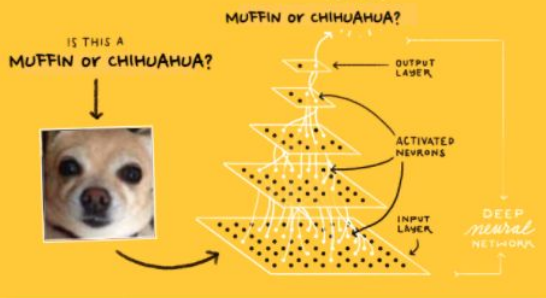
ML6

## Alan Turing

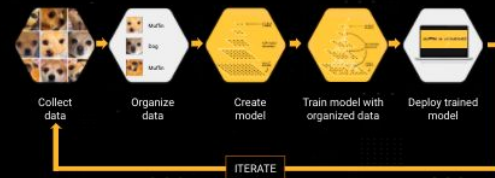


“What we want is a machine that can learn from experience.”

## MUFFIN VS CHIHUAHUA



## The machine learning workflow



## 4. Meetups.

We actively contribute to the ML community and organize multiple events & meetups.

Tensorflow meetup

Ghent & Amsterdam

**ML6**



**DATA SCIENCE  
GHENT**

# Contact details. Let's connect



Julie Plusquin

Talent Partner @ ML6

Jobs@ml6.eu





Welcome to the team